

Accessibility Guide for Dairy Barn

Tel. 01983 855163, sally@theiow.co.uk
www.dairybarnisleofwight.co.uk

Contact for accessibility enquiries: Sally Richards



Welcome

Dairy Barn is a luxury 5* Gold Award three-bedroom barn conversion located in an idyllic and peaceful rural setting on a working farm. It was originally built in the 1800's of traditional stone as a dairy parlour but has been tastefully converted and furnished to a very high standard. It offers three en-suite double bedrooms (sleeping 6), a large well equipped kitchen with Aga and an electric oven & hob, separate dining room and spacious lounge with a wood-burner and SKY TV. It also has a private 2-acre woodland garden for exclusive use by guests.

Watch the video: [360 degree view](#)

At a Glance



Level Access

- The main entrance has 1 step. There is no lift and no ramp.
- There is level access from the main entrance to:
 - Lounge
 - Downstairs Cloakroom
 - Garden



Access with steps

- There are steps from the main entrance to:
 - Bedroom
 - Farm courtyard



Bedrooms

- We have non-allergic bedding.



Visual

- The walls and the doors have high colour contrast.
- We have information in large print.

Getting here

Dairy Barn
Manor Road
Wroxall
PO38 3DF



Travel by public transport

- You can get to Dairy Barn by bus.
- There are buses that run from the three ferry ports of Yarmouth, Cowes and Fishourne into Newport where there is a connecting bus to Wroxall (No 3 Route). The bus stops at the bottom of Manor Road by the public house, The Star, which is about half a mile away from Dairy Barn. Manor Road is a country lane with no pedestrian pathways and is uphill. The bus stop is 0.50 miles / 4.8 km from Dairy Barn.
- The bus operator is Southern Vectis



Travel by taxi

- You can get a taxi with Macs by calling 01983 862344. The taxi company has a wheelchair accessible vehicle.
- You can get a taxi with Charlies Taxis by calling 07515 853698.



Parking

- We have a car park. There are accessible parking spaces. The parking is less than 50 metres from the main entrance. Parking is free.
- There is a drop-off point at the main entrance. The drop-off point has a dropped kerb.
- From the car park to the entrance, there is level access. The route is 10000mm wide, or more.
- Parking is in front of building with drop off just outside the front door



Car parking area opposite the Dairy Barn



Parking in farm courtyard right in front of barns

Arrival



Path to main entrance

- From the street to the main entrance, there is level access.
- The path is 3850mm wide, or more.



Main entrance

- The main door is side hung and manual.
- The door is 1170mm wide.
- The main entrance has 1 steps.



Farm and Dairy Barn entrance off Manor Road



Entrance opening up to farm courtyard with Dairy Barn on left

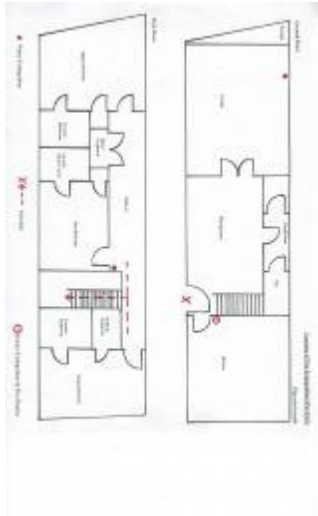


Front door to property with step 190mm in height

Getting around inside

Visual Impairment - General Information

- We have high colour contrast between walls and doorframes.



Floor plan of the Dairy Barn from which you will see the accommodation is on two floors

Bedrooms

- All bedrooms have windows.
- Bedrooms have ceiling lights, bedside lamps and natural daylight.
- Lights are halogen. All bedrooms are non-smoking.
- We have non-allergic bedding.
- All bedrooms have fitted carpets.
- We do not take pets other than assistance dogs
- We can move the bedroom furniture, to improve accessibility.
- No bedrooms have level access. The bedroom nearest the main entrance has 12 steps.
- All bedrooms are ensuite.
- We have bathrooms with a separate shower.
- We have bathrooms with a bath and overhead shower. The walls and the fittings have high colour contrast.
- The direction of transfer onto the toilet is to the left and right.



Separate shower in Blue Bedroom en-suite which has a threshold entrance step to shower of 330mm



Master Bedroom en-suite with shower over bath - lip of bath 560mm from floor

Self catering kitchen

Kitchen

- We have a separate kitchen and dining room. From the main entrance to the kitchen, there is level access.
- The route is 710mm wide, or more.
- The door is 760mm wide.
- The work surface is available at a height between 650mm and 900mm.
- The hob is available at a height between 650mm and 900mm.
- The sink is available at a height between 650mm and 900mm.
- The oven is available at a height between 650mm and 900mm.

- The table and plates have high colour contrast.
- From the main entrance to the dining room, there is level access. The route is 710mm wide, or more. The door is 760mm wide.
- There is a kitchen table in the Kitchen which has a underspace height clearance of 630mm



Entrance to Kitchen by front door



Kitchen worktops



Kitchen table



Dining Room off of front entrance

Lounge

Lounge

- From the main entrance to the lounge, there is level access. The route is 1000mm wide, or more. The door is 1400mm wide.
- There are double doors opening inwards to Lounge



Double doors from Dining Room to Lounge

Downstairs Cloakroom

- From the main entrance to this area, there is level access. The route is 730mm wide, or more.
- The door is 760mm wide.
- The downstairs Cloakroom has two doors, narrowest part of first is 730mm and second door to right is 710mm.



Main door to downstairs Cloakroom



Inner door to downstairs Cloakroom

Getting around outside

Garden

- From the main entrance to the gardens, there is level access.
- The route is 1220mm wide, or more.
- Access to garden is across the lane via a gate or alternatively a wooden footbridge



Main entrance to garden



Alternative footbridge to garden

Farm courtyard

- The route is 1170mm wide, or more. The entrance is 1170mm wide.
- From the main entrance to the area, there is 1 step.
- There are two bench seats and a pic-nic table located in the front of Dairy Barn for guests use



Front of Dairy Barn

Customer care support

Accessibility equipment

- The nearest toilet area for assistance dogs is in private garden across lane which Dairy Barn guests have exclusive use of
- We have an area to charge mobility scooters and battery powered wheelchairs.

- There is an outside power point in the open garage of The Hay Loft which adjoins Dairy Barn
- You can hire mobility equipment from Coastal Mobility, Isle of Wight by calling 01983 866431.

Customer care support

- We have information in large print.
- Guest information can be printed in larger print if required.
If there is a maintenance issue with Dairy Barn, our Property Manager, Sally Richards, is on call

Guide last updated: 30 May 2019